

The image features a dark green background with a close-up of a leaf on the left side, showing water droplets. The text is overlaid on this background.

Kirker

BIO-SOURCED

Inclusive Treatment Portfolio

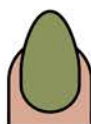
**Sustainable, modern nail
care essentials created
from renewable resources.**

PREP PRODUCTS

Products created to prepare the nail and nail bed for the ultimate manicure. When the nail bed is properly prepped for color the longevity of the manicure is extended.

BIO-SOURCED ILLUMINATED JELLY REMOVER

CLEAN SLATE



PRODUCT

I am a jelly texture remover created with a splash of shimmer.

PROFILE

Apply to nail bed to remove manicure and wipe away with cotton.



FORMULA

TR3190

INFORMATION

NON-ACETONE REMOVER WITH SHIMMER EFFECT THAT HELPS HYDRATE AND MOISTURIZE.

FORMULATED WITHOUT

- toluene
- formaldehyde
- formaldehyde resin
- camphor
- methylisothiazolinone
- tphp
- ethyl tosylamide
- animal-derived ingredients
- nonylphenol ethoxylate
- phthalates
- acetone
- bisphenol a
- xylene
- fragrance
- parabens
- sulfates
- glycol
- mehq/hq

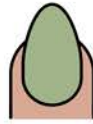
34.75% NATURALLY DERIVED INGREDIENTS



I HAVE BEEN TESTED AND APPROVED BY A LICENSED COSMETOLOGIST

BIO-SOURCED NON-ACETONE REMOVER

RESTART, REFRESH



PRODUCT

I am a remover formulated without acetone to be more gentle yet still effective.

PROFILE

Apply to nail bed to remove manicure and wipe away with cotton.



FORMULA

TR3117

INFORMATION

NON-ACETONE REMOVER THAT EFFECTIVELY REMOVES ALL TRACES OF NAIL LAQUER WITHOUT STRIPPING THE NAIL. PROFESSIONAL FORMULA FOR SALON-QUALITY RESULTS.

FORMULATED WITHOUT

- toluene
- formaldehyde
- formaldehyde resin
- camphor
- methylisothiazolinone
- tphp
- ethyl tosylamide
- animal-derived ingredients
- nonylphenol ethoxylate
- phthalates
- acetone
- bisphenol a
- xylene
- fragrance
- parabens
- sulfates
- glycol
- mehq/hq

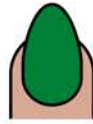
97.5% NATURALLY DERIVED INGREDIENTS



I HAVE BEEN TESTED AND APPROVED BY A LICENSED COSMETOLOGIST

BIO-SOURCED NAIL CLEANSE

THE PERFECT PREP



PRODUCT

I am an essential pre-color nail cleanse created to wipe away impurities.

PROFILE

Apply to nails as the first step to prep for the perfect manicure.



FORMULA

TR3118

INFORMATION

FORMULATED TO CLEANSE AND PREP THE NAIL FOR MANICURE NEXT STEPS.

FORMULATED WITHOUT

- toluene
- formaldehyde
- formaldehyde resin
- camphor
- methylisothiazolinone
- tphp
- ethyl tosylamide
- animal-derived ingredients
- nonylphenol ethoxylate
- phthalates
- acetone
- bisphenol a
- xylene
- fragrance
- parabens
- sulfates
- glycol
- mehq/hq

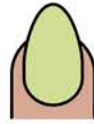
97.25% NATURALLY DERIVED INGREDIENTS



I HAVE BEEN TESTED AND APPROVED BY A LICENSED COSMETOLOGIST

BIO-SOURCED NAIL SCRUB

GENTLE EXFOLIATION



PRODUCT

I am gentle yet effective nail scrub that exfoliates while also cleanses underneath the nail bed and around the surface.

PROFILE

Apply product to nail and nail bed while gently scrubbing away impurities. Ensure product is completely removed prior to applying base coat.



FORMULA

TR3115

INFORMATION

FORMULATED TO HELP EXFOLIATE NAIL BED AND CLEANSE AND REMOVE RESIDUE FROM NAIL.

FORMULATED WITHOUT

- toluene
- formaldehyde
- formaldehyde resin
- camphor
- methylisothiazolinone
- tphp
- ethyl tosylamide
- animal-derived ingredients
- nonylphenol ethoxylate
- phthalates
- acetone
- bisphenol a
- xylene
- fragrance
- parabens
- sulfates
- glycol
- mehq/hq

90.75% NATURALLY DERIVED INGREDIENTS



I HAVE BEEN TESTED AND APPROVED BY A LICENSED COSMETOLOGIST

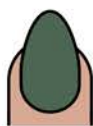
FIRST PRODUCTS

Products created as the first step to the perfect manicure. These products are essential as they are key in acting as a color magnet while performing as a primer.

**SUSTAINABLE
VEGAN
FIRST**

BIO-SOURCED PLUMPING STICKY BASE COAT

THE COLOR MAGNET



PRODUCT

I am a gripping base coat created to help the adhesion and protection of the nail bed.

PROFILE

Apply one coat to clean, bare nails. When dry to touch follow with colored enamel application.



FORMULA

TR3147

INFORMATION

FORMULATED FOR COLOR TO ADHERE TO THE NAIL AND ACT AS A COLOR MAGNET.

FORMULATED WITHOUT

- toluene
- formaldehyde
- formaldehyde resin
- camphor
- methylisothiazolinone
- tphp
- ethyl tosylamide
- animal-derived ingredients
- nonylphenol ethoxylate
- phthalates
- acetone
- bisphenol a
- xylene
- fragrance
- parabens
- sulfates
- glycol
- mehq/hq

71.75% NATURALLY DERIVED INGREDIENTS

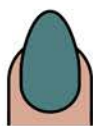


I HAVE BEEN TESTED AND APPROVED BY A LICENSED COSMETOLOGIST

**SUSTAINABLE
VEGAN
FIRST**

BIO-SOURCED STRENGTHENER

TOUGHER, STRONGER NAILS



PRODUCT

I am a strengthening base coat formulated to help external reinforcement by helping the nail become stronger and to help prevent splitting.

PROFILE

Apply one coat to clean, bare nails. When dry to touch follow with colored enamel application.



FORMULA

TR3140

INFORMATION

FORMULATED TO HELP NORMALIZE THE NAIL TO PROMOTE NAIL GROWTH.

FORMULATED WITHOUT

- toluene
- formaldehyde
- formaldehyde resin
- camphor
- methylisothiazolinone
- tphp
- ethyl tosylamide
- animal-derived ingredients
- nonylphenol ethoxylate
- phthalates
- acetone
- bisphenol a
- xylene
- fragrance
- parabens
- sulfates
- glycol
- mehq/hq

79.25% NATURALLY DERIVED INGREDIENTS

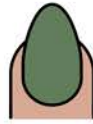


I HAVE BEEN TESTED AND APPROVED BY A LICENSED COSMETOLOGIST

**SUSTAINABLE
VEGAN
FIRST**

BIO-SOURCED RIDGE FILLER

COLOR CORRECTOR



PRODUCT

I am a surface smoother created to neutralize and conceal nail imperfections.

PROFILE

Can be worn alone or under colored nail enamel to reduce the appearance of ridges.



FORMULA

TR3142

INFORMATION

FORMULATED TO SELF-LEVEL TO HELP ENHANCE, SUPPORT, AND SMOOTH THE APPEARANCE OF NATURAL NAILS.

FORMULATED WITHOUT

- toluene
- formaldehyde
- formaldehyde resin
- camphor
- methylisothiazolinone
- tphp
- ethyl tosylamide
- animal-derived ingredients
- nonylphenol ethoxylate
- phthalates
- acetone
- bisphenol a
- xylene
- fragrance
- parabens
- sulfates
- glycol
- mehq/hq

76.5% NATURALLY DERIVED INGREDIENTS

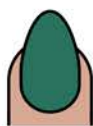


I HAVE BEEN TESTED AND APPROVED BY A LICENSED COSMETOLOGIST

**SUSTAINABLE
VEGAN
FIRST**

BIO-SOURCED HYDRATOR

BRING ON THE NOURISHMENT



PRODUCT

I am a base coat formulated to help maintain a healthy moisture balance to help keep the nails more flexible.

PROFILE

Apply one coat to clean, bare nails. When dry to touch follow with colored enamel application.



FORMULA

TR3143

INFORMATION

FORMULATED TO KEEP THE NAILS LESS BRITTLE TO HELP PREVENT BREAKING AND PEELING.

FORMULATED WITHOUT

- toluene
- formaldehyde
- formaldehyde resin
- camphor
- methylisothiazolinone
- tphp
- ethyl tosylamide
- animal-derived ingredients
- nonylphenol ethoxylate
- phthalates
- acetone
- bisphenol a
- xylene
- fragrance
- parabens
- sulfates
- glycol
- mehq/hq

86.0% NATURALLY DERIVED INGREDIENTS

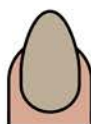


I HAVE BEEN TESTED AND APPROVED BY A LICENSED COSMETOLOGIST

**SUSTAINABLE
VEGAN
FIRST**

BIO-SOURCED BRIGHTENER

NATURAL GLOW



PRODUCT

I am an instant nail bright created to provide a healthier and whiter nail glow effect.

PROFILE

Can be worn alone or under colored nail enamel to reduce the appearance of discoloration.



FORMULA

TR3145

INFORMATION

FORMULATED TO HELP MASK COLOR IMPURITIES IN THE NAIL FOR A WHITER AND BRIGHTER APPEARANCE.

FORMULATED WITHOUT

- toluene
- formaldehyde
- formaldehyde resin
- camphor
- methylisothiazolinone
- tphp
- ethyl tosylamide
- animal-derived ingredients
- nonylphenol ethoxylate
- phthalates
- acetone
- bisphenol a
- xylene
- fragrance
- parabens
- sulfates
- glycol
- mehq/hq

75.0% NATURALLY DERIVED INGREDIENTS

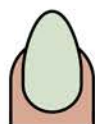


I HAVE BEEN TESTED AND APPROVED BY A LICENSED COSMETOLOGIST

**SUSTAINABLE
VEGAN
FIRST**

BIO-SOURCED NAIL GROWTH ELIXIR

STRONG YET FLEXIBLE SUPPORT



PRODUCT

I am a base coat created to help minimize breakage and peeling and renew nails to a healthy condition.

PROFILE

Apply one coat to clean, bare nails. When dry to touch follow with colored enamel application.



FORMULA

TR3146

INFORMATION

FORMULATED TO HELP CREATE AND MAINTAIN THE NORMAL MOISTURE BALANCE NECESSARY FOR NAIL FLEXIBILITY.

FORMULATED WITHOUT

- toluene
- formaldehyde
- formaldehyde resin
- camphor
- methylisothiazolinone
- tphp
- ethyl tosylamide
- animal-derived ingredients
- nonylphenol ethoxylate
- phthalates
- acetone
- bisphenol a
- xylene
- fragrance
- parabens
- sulfates
- glycol
- mehq/hq

76.0% NATURALLY DERIVED INGREDIENTS



I HAVE BEEN TESTED AND APPROVED BY A LICENSED COSMETOLOGIST

kirker

A woman's face is partially visible on the left side of the image, with her hand holding a large, vibrant green leaf. The background is a soft, light green color. The overall aesthetic is clean and natural.

kirker

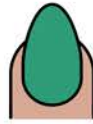
FINNISH PRODUCTS

Products created to protect your manicure or help to aid in maintenance and rejuvenation.

**SUSTAINABLE
VEGAN
FINISH**

BIO-SOURCED FAST DRY TOP COAT

FAST AND GLOSSY



PRODUCT

I am a fast-drying, long-lasting, extreme gloss top coat with a flawless, chip-resistant and protective finish.

PROFILE

Once the colored nail enamel is dry to the touch, apply a thin layer of top coat over your manicure for gloss and longevity.



FORMULA

TR3127

INFORMATION

FORMULATED FOR A SPEEDY DRY TIME WHILE ALSO HELPING TO PROTECT THE MANICURE.

FORMULATED WITHOUT

- toluene
- formaldehyde
- formaldehyde resin
- camphor
- methylisothiazolinone
- tphp
- ethyl tosylamide
- animal-derived ingredients
- nonylphenol ethoxylate
- phthalates
- acetone
- bisphenol a
- xylene
- fragrance
- parabens
- sulfates
- glycol
- mehq/hq

80.5% NATURALLY DERIVED INGREDIENTS

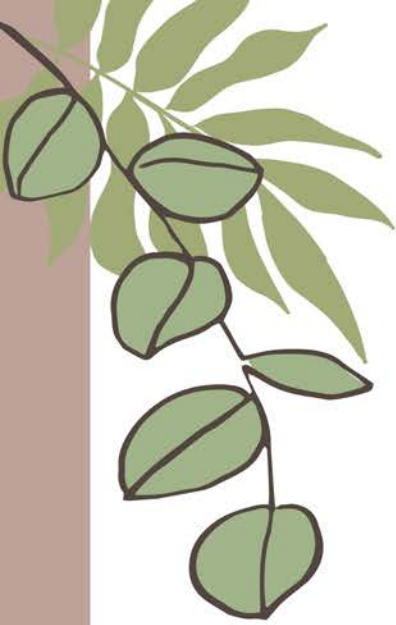


I HAVE BEEN TESTED AND APPROVED BY A LICENSED COSMETOLOGIST

**SUSTAINABLE
VEGAN
FINISH**

BIO-SOURCED PLUMPING TOP COAT

CUSHIONY PROTECTION



PRODUCT

I am a top coat with a high gloss finish and a soft, cushiony look of a gel manicure.

PROFILE

Once the colored nail enamel is dry to the touch, apply a thin layer of top coat over your manicure for gloss and longevity.



FORMULA

TR3135

INFORMATION

FORMULATED TO PROVIDE A HARD AND CHIP-RESISTANT FINISH TO EXTEND THE MANICURE AND PROVIDE MAXIMUM PROTECTION.

FORMULATED WITHOUT

- toluene
- formaldehyde
- formaldehyde resin
- camphor
- methylisothiazolinone
- tphp
- ethyl tosylamide
- animal-derived ingredients
- nonylphenol ethoxylate
- phthalates
- acetone
- bisphenol a
- xylene
- fragrance
- parabens
- sulfates
- glycol
- mehq/hq

69.0% NATURALLY DERIVED INGREDIENTS

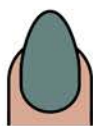


I HAVE BEEN TESTED AND APPROVED BY A LICENSED COSMETOLOGIST

**SUSTAINABLE
VEGAN
FINISH**

BIO-SOURCED SMUDGE FIXER

NO MORE WORRIES



PRODUCT

I am the manicure solution to smudges, nicks, or dents.

PROFILE

Lightly apply to the entire nail to smooth out imperfections.



FORMULA

TR2859

INFORMATION

FORMULATED TO HELP FIX SMUDGES AND OTHER IMPERFECTIONS.

FORMULATED WITHOUT

- toluene
- formaldehyde
- formaldehyde resin
- camphor
- methylisothiazolinone
- tphp
- ethyl tosylamide
- animal-derived ingredients
- nonylphenol ethoxylate
- phthalates
- acetone
- bisphenol a
- xylene
- fragrance
- parabens
- sulfates
- glycol
- mehq/hq

91.0% NATURALLY DERIVED INGREDIENTS

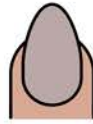


I HAVE BEEN TESTED AND APPROVED BY A LICENSED COSMETOLOGIST

**SUSTAINABLE
VEGAN
FINISH**

BIO-SOURCED STRENGTHENING TOP COAT

VITALITY PROTECTION



PRODUCT

I am a strengthening top coat created to aid in helping significantly weak and fragile nails from breaking and peeling.

PROFILE

Once the colored nail enamel is dry to the touch, apply a thin layer of top coat over your manicure for gloss and longevity.



FORMULA

TR3129

INFORMATION

FORMULATED TO HELP WEAK AND FRAGILE NAILS BECOME MORE BEND RESISTANT TO HELP PROMOTE NAIL GROWTH.

FORMULATED WITHOUT

- toluene
- formaldehyde
- formaldehyde resin
- camphor
- methylisothiazolinone
- tphp
- ethyl tosylamide
- animal-derived ingredients
- nonylphenol ethoxylate
- phthalates
- acetone
- bisphenol a
- xylene
- fragrance
- parabens
- sulfates
- glycol
- mehq/hq

80.25% NATURALLY DERIVED INGREDIENTS

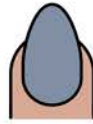
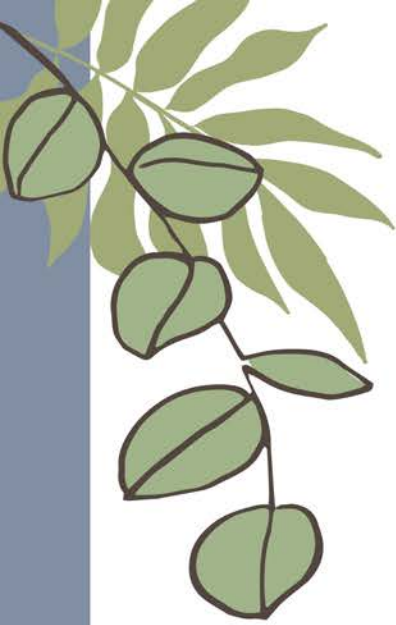


I HAVE BEEN TESTED AND APPROVED BY A LICENSED COSMETOLOGIST

**SUSTAINABLE
VEGAN
FINISH**

BIO-SOURCED HIGH GLOSS TOP COAT

FAST AND GLOSSIEST



PRODUCT

I am a color enhancing top coat that will provide protection and enhance nail enamel shades.

PROFILE

Once the colored nail enamel is dry to the touch, apply a thin layer of top coat over your manicure for gloss and longevity.



FORMULA

TR3130

INFORMATION

FORMULATED TO ADD DEPTH OF COLOR, SUPERB GLOSS, WHILE PROVIDING A HARD, CHIP-RESISTANT FINISH.

FORMULATED WITHOUT

- toluene
- formaldehyde
- formaldehyde resin
- camphor
- methylisothiazolinone
- tphp
- ethyl tosylamide
- animal-derived ingredients
- nonylphenol ethoxylate
- phthalates
- acetone
- bisphenol a
- xylene
- fragrance
- parabens
- sulfates
- glycol
- mehq/hq

80.0% NATURALLY DERIVED INGREDIENTS



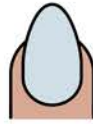
I HAVE BEEN TESTED AND APPROVED BY A LICENSED COSMETOLOGIST

**SUSTAINABLE
VEGAN
FINISH**

BIO-SOURCED

ALL IN ONE

MULTI USE



PRODUCT

Created to help the adhesion and nail protection of a base coat, while providing the high gloss and wear preservation of a top coat.

PROFILE

Apply as a base coat under colored nail enamel, wear alone as a clear, or use over colored nail enamel as a top coat.



FORMULA

TR3134

INFORMATION

FORMULATED TO HELP PROVIDE MULTI-PURPOSE BENEFITS WITH JUST ONE FORMULATION.

FORMULATED WITHOUT

- toluene
- formaldehyde
- formaldehyde resin
- camphor
- methylisothiazolinone
- tphp
- ethyl tosylamide
- animal-derived ingredients
- nonylphenol ethoxylate
- phthalates
- acetone
- bisphenol a
- xylene
- fragrance
- parabens
- sulfates
- glycol
- mehq/hq

80.75% NATURALLY DERIVED INGREDIENTS

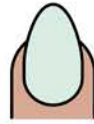


I HAVE BEEN TESTED AND APPROVED BY A LICENSED COSMETOLOGIST

**SUSTAINABLE
VEGAN
FINISH**

BIO-SOURCED ILLUMINATED CUTICLE SERUM

WITH MICA



PRODUCT

I am a cuticle serum created with a touch of luminescence and a non-greasy finish.

PROFILE

Apply to cuticle area to help hydrate and nourish.



FORMULA

TR3189

INFORMATION

FORMULATED TO HELP RESTORE AND CONDITION YOUR NAILS AND CUTICLES.

FORMULATED WITHOUT

- toluene
- formaldehyde
- formaldehyde resin
- camphor
- methylisothiazolinone
- tphp
- ethyl tosylamide
- animal-derived ingredients
- nonylphenol ethoxylate
- phthalates
- acetone
- bisphenol a
- xylene
- fragrance
- parabens
- sulfates
- glycol
- mehq/hq

99.25% NATURALLY DERIVED INGREDIENTS



I HAVE BEEN TESTED AND APPROVED BY A LICENSED COSMETOLOGIST